



Easter Raffle Tickets

We are still selling raffle tickets in school at £1.00 each. Each raffle ticket bought, will be one entry into our Big Easter Raffle Draw! If you wish to buy any raffle tickets, please send the ticket back into school with payment no later than Wednesday 6th April ready for the big draw on Friday 8th April. If you would like any extra raffle tickets, we do have some spares in the school office.

Pob lwc pawb!

Parent's Evenings

A reminder that parent's evenings have been scheduled for the afternoons of Monday 4th & Tuesday 5th April for most classes. We are delighted to finally be able to invite parents back into school for face to face appointments. We will be asking that all visitors wear a face covering whilst in the school building, if not exempt, due to the high number of Covid cases in the area recently. There will also be sanitiser available throughout the school.

We are looking to hold Class HP parent's evenings 24th and 25th May. We will open up the booking system nearer the time. Once again, many thanks for your patience and co-operation.

Autism Awareness Week

It has been lovely to see everyone's uniqueness shine through today in response to 'This is me' day, at the end of Autism Awareness week. Most of the pupils have had workshops throughout the day, developing their understanding and knowledge of the varying needs of others, through a visit from Inclusion Curriculum. The children were again a real credit to you all. Please ask them to share with you what they learnt. Big thanks to those who sent in a chocolate donation too! Diolch!

PE Kits

After Easter we will return to the children bringing in their PE kits on their timetabled day, rather than wearing them to school, in another step towards returning to normal. We appreciate that it's the last term of the academic year, so we don't want you to feel pressured into purchasing our specified school PE kit, particularly for our Year 6. But we do ask that, if possible, your child brings plain shorts and T-shirts, as well as suitable pumps/trainers for carrying out P.E. safely.

School Uniform

Many items of clothing are lost or mislaid during the year. Please ensure each item of your child's clothing is marked with their name. A reminder, that to keep within our uniform policy, jewellery is not a part of the school dress and contravenes Local Authority Health and Safety Regulations. If, however, children have pierced ears, they may wear studs only. In addition, a wristwatch may be worn. The wearing of any other jewellery is not allowed. Please also remember that long hair should be tied up fully and children should also be wearing **full black shoes** with a suitable heel height.

Safeguarding - Safeguarding is the responsibility of all adults. Everyone has a responsibility to keep children and young people safe.

Have a concern? It needs to be reported. School Safeguarding Lead is Mr P Hamilton and Deputy SG Lead is Mrs J Lewis, or contact SPOA direct on 01978 292039 or out of hours on 0845 0533 116 and if an emergency call 999.

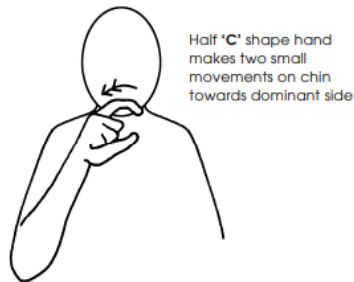
Safe-guarding

A reminder that we ask parents do not enter the school premises before 2:55pm each day as the children may still need use of the yard before this time.

Easter Holiday

A reminder school closes for Easter next, **Friday 8th April**. School re-opens for pupils on **Monday 25th April at 08:50am (07:50am for Breakfast Club)**.

Makaton Sign of the Week -



Chocolate